

FIRST FLOOR PLAN

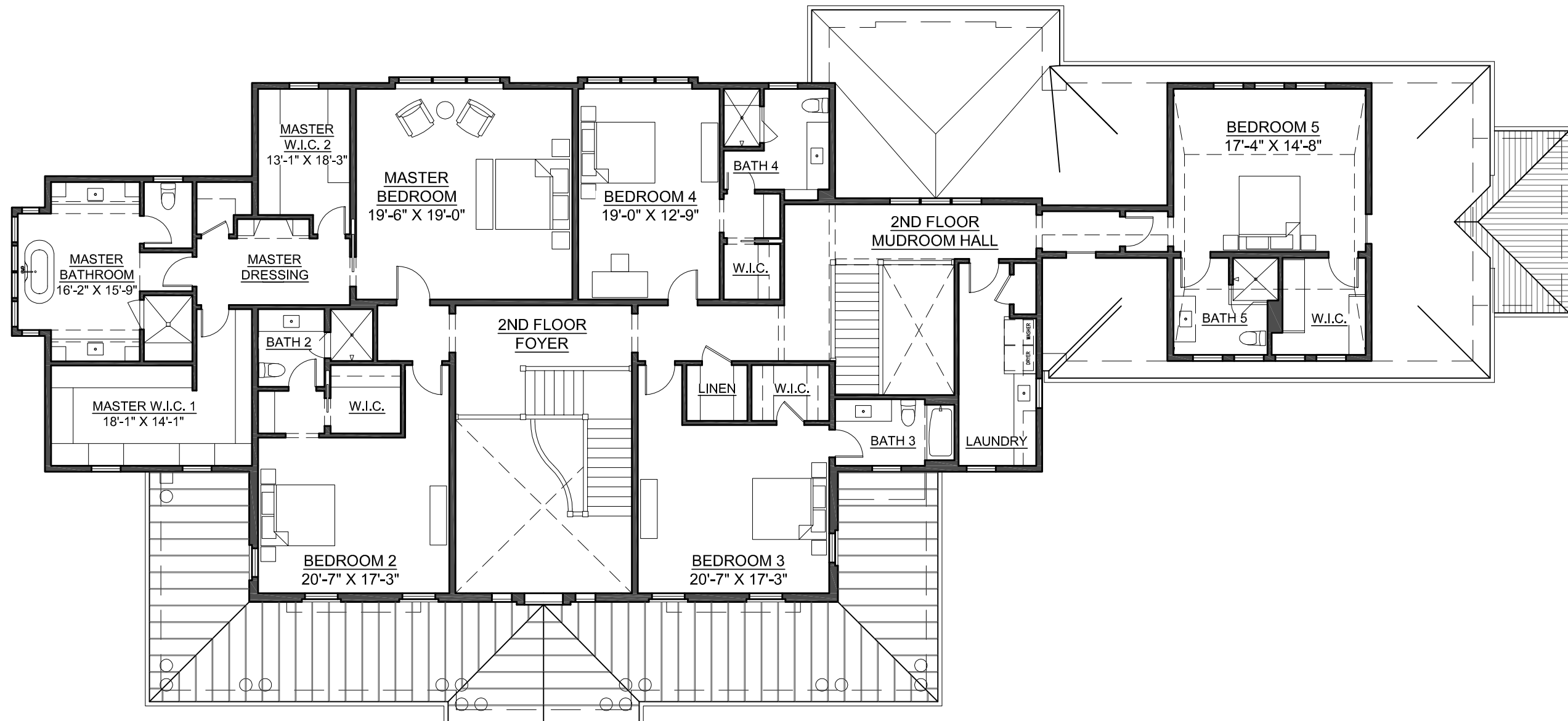
3,732 SQ. FT. LIVING AREA
 1,091 SQ. FT. GARAGE

MGA | Marcus Gleysteen Architects

129 Kingston Street, 5th Floor, Boston MA 02111
 t 617.542.6060

441 GLEN ROAD

WESTON, MASSACHUSETTS



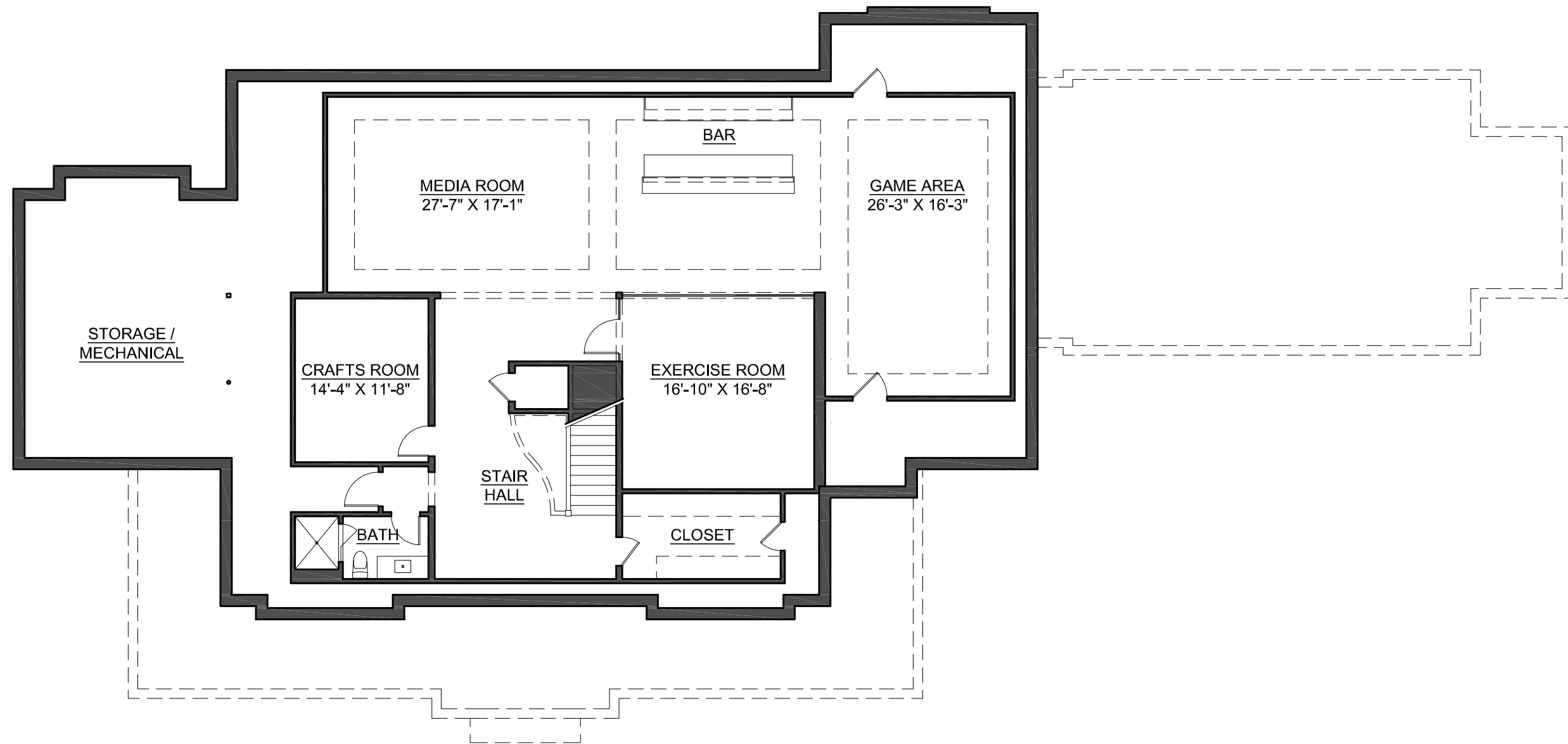
SECOND FLOOR PLAN
 3,570 SQ. FT. LIVING SPACE

MGA | Marcus Gleysteen Architects

129 Kingston Street, 5th Floor, Boston MA 02111
 t 617.542.6060

441 GLEN ROAD

WESTON, MASSACHUSETTS



BASEMENT PLAN
2,355 SQ. FT. LIVING AREA